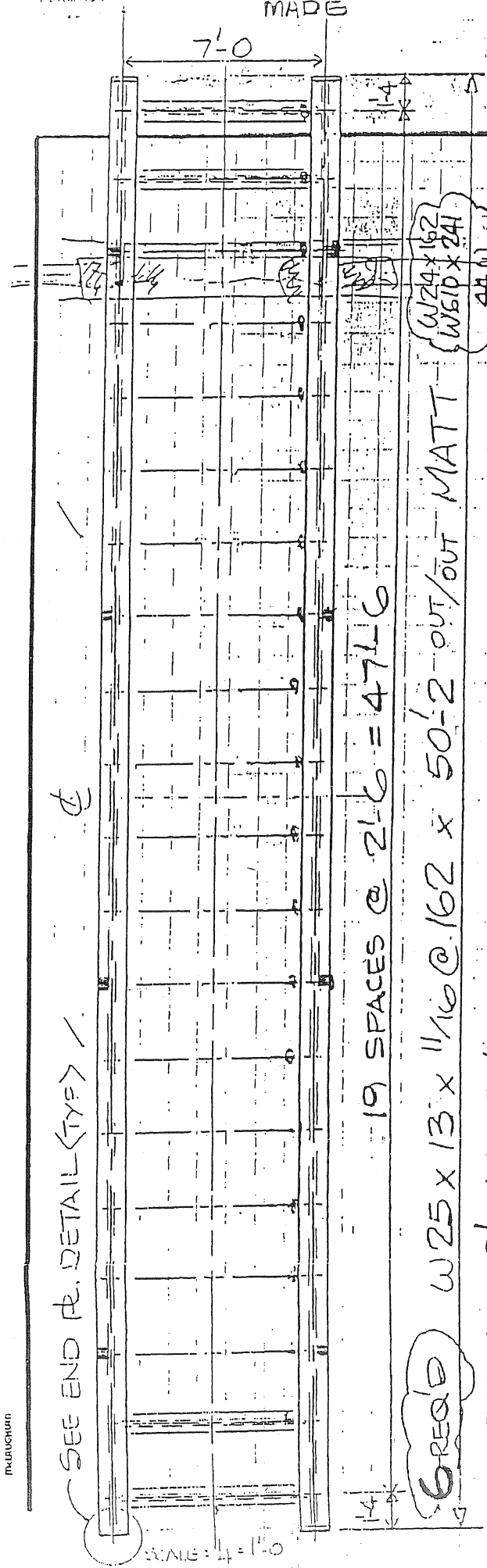


1. WU U MADE

SKT. B1 50'-2 MATT (HEAVY DUTY)

I.W. 389 CONT. No. PAGE No. OF.



WT = 24,950 #
 $V_{max} = 310.2$ kips/bee
 $M_{max} = 1002$ ft-K/bee
 TOTAL MATT

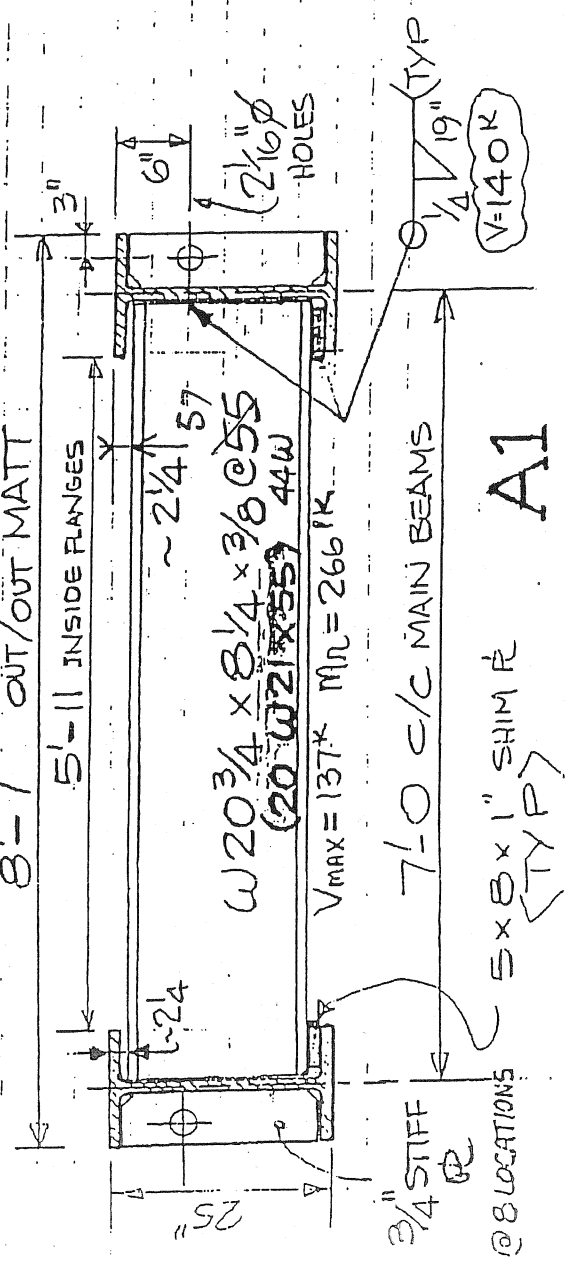
$V_{max} = 620.4$ kips
 $M_{max} = 2004$ ft-K
 $I_{xx} = 10,340$ in⁴

SEE END DETAIL (TYP)

19 SPACES @ 2 1/8 = 47 1/8

6 ROWS W25 x 13 x 1 1/8 @ 162 x 50'-2 OUT/OUT MATT

8'-1 OUT/OUT MATT



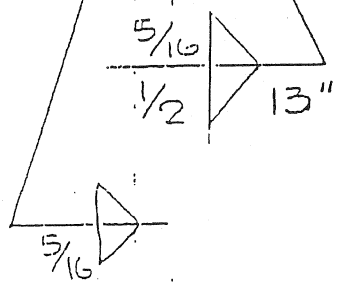
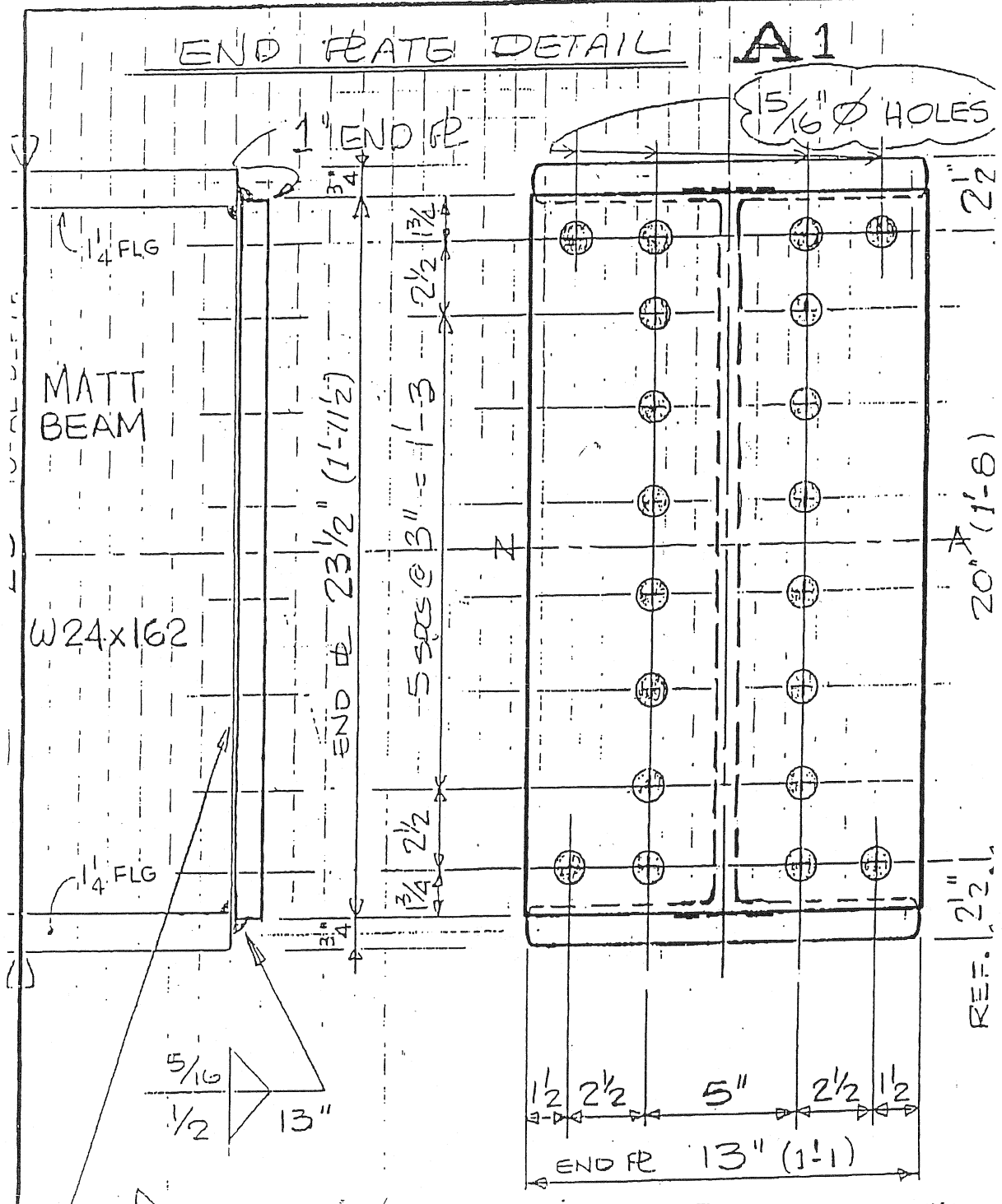
A1

5 x 8 x 1" SHIM (TYP)

@ 8 LOCATIONS

MANUFACTURER

SCALE: 1/4" = 1'-0"



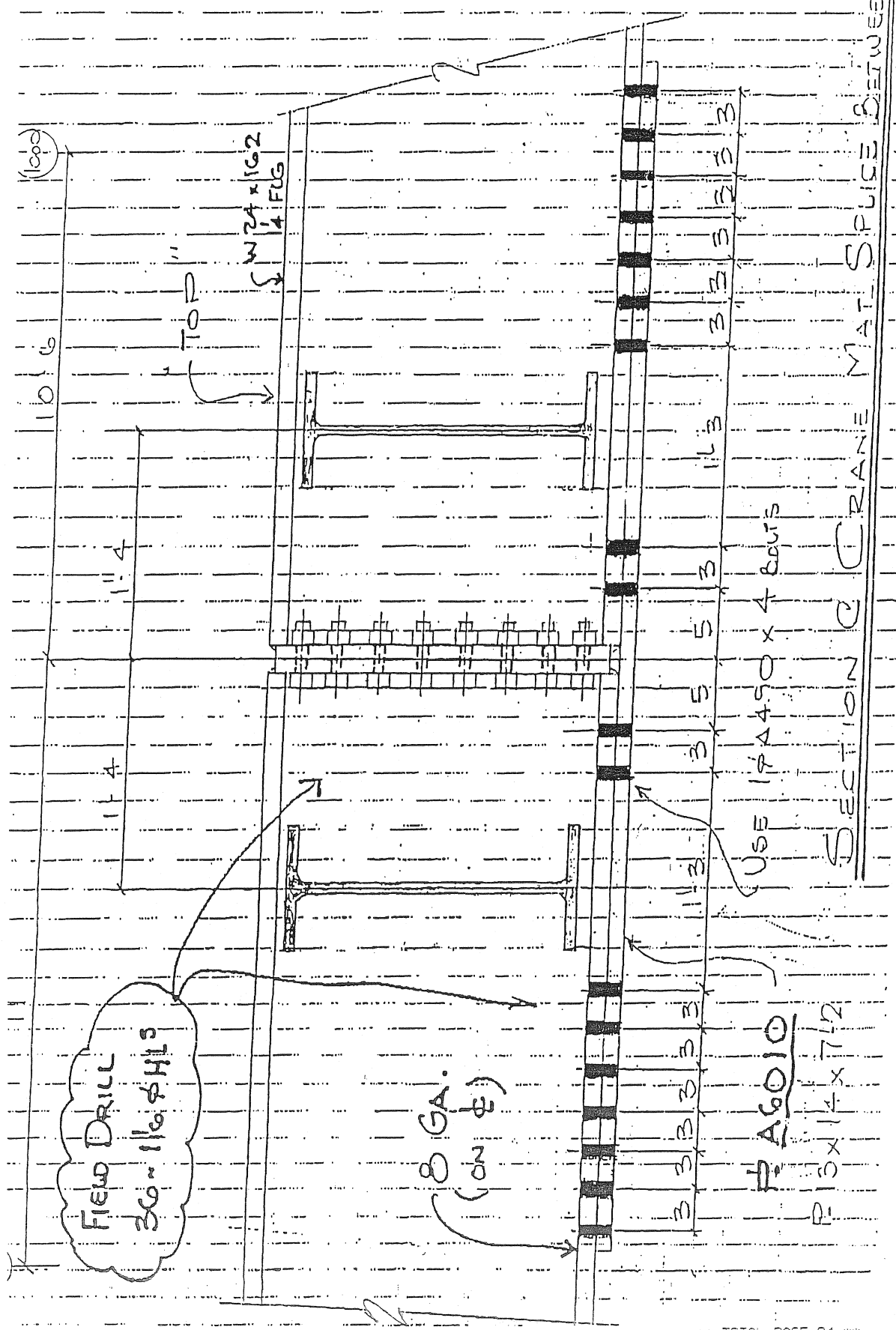
Use 20 - 7/8" ϕ x 3 1/2" A325 BOLTS

END PLATE

$V_{\text{MAXIMUM}} = 360 \text{ Kips (BOLT CAPACITY)}$

$M_{\text{MAXIMUM}} = 246 \text{ ft-Kips}$ -11-

(CRANE MAT SPICE)



FIELD DRILL
30 ~ 1 1/2" ϕ H'S

8 GA.
(ON ϕ)

A6010
1 3/4" x 7/2"

USE 1" ϕ 490 x 4 BOLTS

SECTION OF CRANE MAT SPICE BETWEEN 1000 & 1100